

GROUND FLOOR
APPROX. FLOOR
AREA 750 SQ.FT.
(69.7 SQ.M.)

TOTAL APPROX. FLOOR AREA 1077 SQ.FT. (100.1 SQ.M.)

THIS PLAN IS FOR ROOM IDENTIFICATION ONLY, AND ITS ACCURACY IS NOT GUARANTEED. www.epcsinessex.co.uk
Made with Metropix ©2021



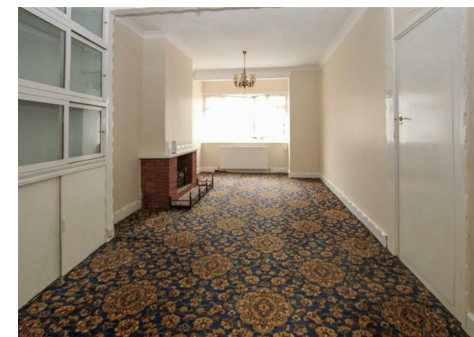
55 Crow Green Road, Pilgrims Hatch, Brentwood, CM15 9RB

A fantastic opportunity to refurbish or develop, subject to planning permission, this three-bedroom chalet bungalow, which is situated on a large plot in a lovely position.

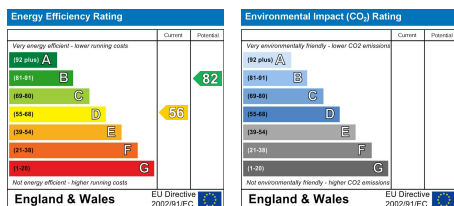
The accommodation comprises a large lounge with a bay window, a kitchen/breakfast room, two ground floor bedrooms and a shower room. The first floor is home to a master bedroom with an en-suite.

There is a large garden and a double garage to the rear, whilst the front has a driveway for off street parking.

The property is situated in the popular Pilgrims Hatch area, with highly rated schools and shops close by. It is just a short drive to both Brentwood and Shenfield High Streets and Stations, both offering high-speed links to London Liverpool Street.



Offers In Excess Of £450,000



SERVICES:

Local Authority: Brentwood
Council tax band: D
Post code: CM15 9RB

VIEWING:

Strictly by prior arrangement with Keith Ashton Estate Agents

OPENING HOURS:

Monday to Friday: 8.45AM - 6.30PM | Saturdays: 9AM - 5.30PM | Sundays: 10AM - 2PM

MORTGAGE INFORMATION: We offer the additional facility of an in-house Independent Financial Adviser who will access all mortgage lenders with the purpose of providing you with the benefit of choice. For quotations or comparables please call 01277 260858 or visit our interactive website at www.mortgagebusiness.net



We the Agent have not tested any apparatus, fittings or services for this property. The plot size is intended merely as a guide and has not been officially measured or verified by the Agent. Photographs are for illustration only and may depict items which are not for sale or included in the sale of the property. As part of the service we offer we may recommend ancillary services to you which we believe may help you with your property transaction. We wish to make you aware, that should you decide to use these services we will receive a referral fee. For full and detailed information please visit 'terms and conditions' on our website www.keithashton.co.uk

Brentwood
Tel. 01277 260858

Village Office
Tel. 01277 375757

Lettings Office
Tel. 01277 202200

Explore more @ www.keithashton.co.uk

